

# *Adventure awaits your arrival*



Welcome aboard ADRIATIC STAR, a solid example of Dutch yacht building capabilities. With her sea kindly hull design, she is a proven passage maker with above average speed and extended range. In addition to offshore cruising, her shoal draft allows you to enjoy intracoastal travel. Beautifully maintained and continuously upgraded, she is available for immediate delivery

**Aftdeck**

## Specifications

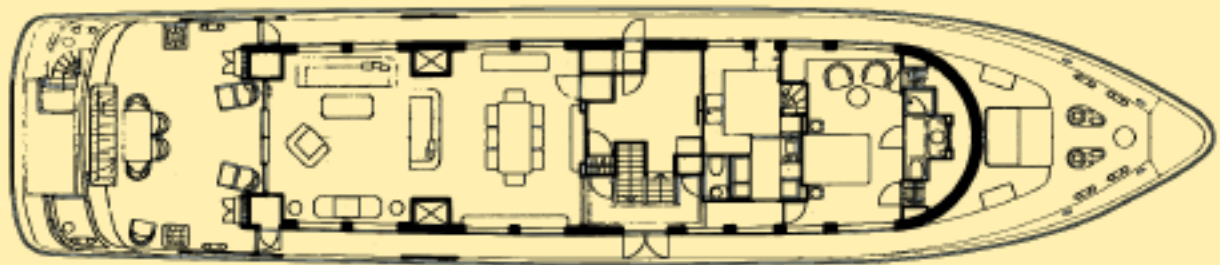
Builder: Hakvoort  
Designer: Diana Yachts  
Length Overall: 118'  
Beam: 26'  
Draft: 6'8"  
Engines: Twin MTU 12V396TB93  
@ 2,000hp  
Cruising Speed: 12 knots  
Maximum Speed: 19 knots  
Fuel Capacity: 13,300 gallons  
Water Capacity: 2,000 gallons



Flybridge

## Electronics

Autopilot  
(2) depth sounders  
(2) GPS • (2) Radars  
(2) VHF • SSB  
Weatherfax  
Entertainment Systems throughout  
Satellite TV  
A/C throughout



## Equipment

(2) 1000 gpd Watermakers  
(2) 55kw generators  
15' Whaler w/ 50hp Evinrude  
20'6" RIB w/ 140hp Johnson  
(2) ACR 406 EPIRB  
Fishing Tackle  
Snorkel Equipment  
Assorted water toys  
(2) full wet bars w/ ice-makers  
(2) 8 person liferafts

# Adriatic Star



*Adriatic Star*

# Adriatic Star



Aftdeck



Dining Salon

From her generous aft deck, open main salon, spacious flybridge (seating up to fourteen), and modern galley, ADRIATIC STAR is well suited for both formal and casual entertaining. The integrated spiral staircase and swim platform allows safe and easy access to the yacht's tenders and access to in the water activities.

The elegant main salon features double foldaway doors leading out to the (air-conditioned) aft deck, providing an added degree of flexibility when entertaining large parties. Another feature is the on-deck head just forward of the salon area.



**Main Salon**



On-deck VIP



Guest



Guest



VIP Head

ADRIATIC STAR sleeps eight in owner and guest accommodations including an on-deck VIP stateroom, full beam master stateroom and two queen size guest staterooms, all with ensuite baths. Separate crew quarters accommodate up to six in three cabins. Minimum headroom throughout the yacht is 6' 8".

Master