

MY AZIMUT 58

Beautifully styled and impeccably detailed, the Azimut 58' is one of the best selling models built by Azimut with the deep-V hull, moderate beam and propeller pockets to reduce shaft angles and draft. This model has luxurious accommodations and superb open-water performance.



Vessel Walkthrough

The floorplan layout is great for entertaining with the galley, wet bar and settee aft cabin of the salon, open lower helm station, three staterooms and heads down forward. There is a fourth stateroom/crew quarters aft deck with a single berth and toilet. The interior is elegant with the high-gloss lacquered woodwork, white ultra leather sofa and beautiful detailing displayed throughout. An appealing feature is her large aft deck with teak sole and twin walk throughs to the swim platform. The flybridge is very spacious with twin sunpads, a wet bar, gaggenau grill and wrap around seating. Forward deck also provides sunpads for bathing. The boat is equipped with a tender with 40 horsepower engine.



Master stateroom forward with centerline Queen berth with new custom mattress, cover and pillow shams, opening hatch overhead, dresser, Panasonic LCD flatscreen and private head with seperate stall shower. This triple cabin layout has V.I.P. stateroom to port with ensuite head and stall shower . Additional guest stateroom to starboard with twin berths. Guest head to port with shower. Up three steps is the large salon with port custom helm seat by Opecmare and two companion seats at lower helm. Salon has two large wrap around ultrasuede sofas, dinning table, coffee table and dry bar along with Bang`Olufsen TV, BOSE sound system with CD changer, Satelite System TV with automatic satelite tracking, custom furniture covers and high gloss cherry woodwork. Galley down to port. Exquisite cherry interior.



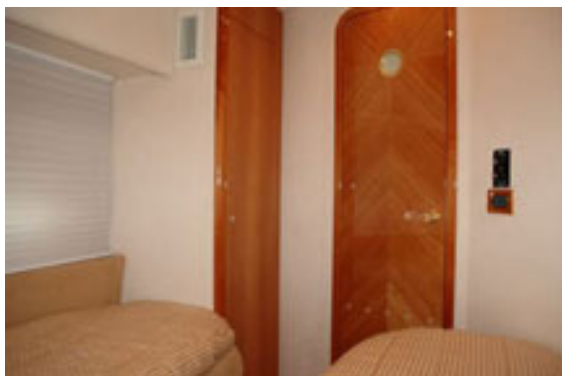
Master Stateroom

The Master has a double island bed with drawers and storage beneath, built-in night stands, 3 closets, TV and mood lighting and an elegant head with seperate shower and full amenities including a vacu-flush toilet. There is also an en suite.

Guest Staterooms

VIP cabin has a double bed with storage beneath. This cabin features many of the same amenities as the master including hanging locker, built-in night stands, TV and an en suite head with full shower and vanity.

The third guest state room features twin berths, buit-in night stand, hanging locker,Plasma TV, carpeting and air conditioning with day head opposite.



Salon

and bottle storage to the port side with steps down to the galley below. To the starboard side, you will see a curved sofa in rich looking leather with an attractive cherry cocktail table. The entire interior features lavish appointments, high-gloss lacquered woodwork, plush furnishings and beautiful detailing. The salon seating will accommodate 10-12 adults in comfort. Moving forward and two steps up, you enter the lower helm which offers good visibility.

BANG&OLUFSEN TV
Surround Sound BOSE
Entertainment Center BOSE
CD & DVD Player BOSE
(2) White ultra-leather sofas with accent pillows
Sunbrella carpet runners

Salon/Dinette Area

This salon features 2 beautiful light colored soft leather sofas, 2 hi-gloss cherry oval coffee tables and cabinetry with storage for dinnerware and glassware. In addition there is a TV with DVD and VCR, surround speakers and carpeting throughout. Reverse cycle air conditioning, overhead lighting and window shades.



GALEY

The galley is down to port side in the aft part of the Salon. It features a large refrigerator, microwave oven, double sinks and 3-burner ceramic stove. It also features Mahogany flooring, Corian Style countertops and convenient secondary engine room access behind a sound-proof door.

- Water heater
- Refrigerator/freezer
- Fresh water pressure system
- Bendix washer/dryer
- 2 Burner Princess elec stove
- Magic chef microwave oven